

Ferny Creek PS Connections



Together we make a difference

Monday 9th February 2026

Hi everyone,

Welcome back to all members of our school community. It has been wonderful to see the smooth start to the year, made possible through the collective efforts of staff, students and families working together. Our 'Stepping Up' school-wide transition days have supported students to feel prepared and connected, helping them begin the year with a sense of familiarity and belonging.

We warmly welcome all new families to our school and hope you have enjoyed becoming part of our wonderfully warm and welcoming community. Our positive sense of community connection and support was certainly on display at our 'Welcome Picnic', and we thank all those who attended. I wonder if there were any sore muscles after the highly competitive parent races! Thank you to our Parents' Club volunteers and Their Care educators for facilitating a fun evening.

A special mention to our new Foundation students, who are already very settled into school routines, attending their classroom and specialist sessions with confidence and proudly navigating the experience of a new school environment.

Once again, the year has begun with a relocation day due to the extreme fire danger rating and once again, our staff, students and parents adapted positively and supported each other during the process. It is perhaps the perfect time to ensure that you are connected to Compass and that we have your current contact details including emergency contacts, to ensure that you are receiving all communications from the school. Please visit the office to update details or connect to Compass.

During the holiday break, we continued to spruce up the school environment. Our maintenance crew were supported by several parents in caring for the outdoor areas of the school while many staff interrupted their well-earned holidays and came into school to prepare and to organise their classrooms and responsibilities for this year. If you have had the opportunity to visit your child's learning spaces this year, you will notice the care and attention to detail that has been put into providing calm, orderly, inviting learning environments across the school. A big thank you to everyone that contributed to ensuring the learning environment at Ferny Creek PS was the best it could be for all of us as we returned to school!

For the first weeks of this year our staff have been working with the students to create a culture where everyone inspires and encourages each other's learning. Embedded in this 'Setting Up for Success' time is the opportunity to collectively set the tone for the year. This includes working with all students to build positive relationships and establish a shared vision connected to our Expected Behaviours Matrix, our Friendology language, our Zones of Regulation strategies and of course, our school values of Respect, Responsibility and Resilience. Our student awards will this year be very explicitly linked to this shared vision of expected behaviours and school values.



Class timetables will be finalised as we complete this Setting Up for Success program and as our Foundation students begin their full days on the 23rd February.

‘Meet the Teacher’ Conversations

As part of our formal communication processes, we will be having ‘Meet the Teacher’ conversations for all families. We invite you to come along and meet with your child’s teacher for a 10-minute discussion. This discussion will provide an opportunity for you to:

- Share information about your child so that the teacher has a comprehensive understanding of their individual circumstances
- Assist the teacher in identifying the personal learning needs of your child
- Ask any questions that you may have regarding the school’s programs and curriculum.

Keep an eye out for further communication regarding the booking process for this event.

Parent Payments

We would like to sincerely thank our families for the incredible support you provide through your financial contributions as part of the annual payments. While government funding provides many important resources for our students, your contributions allow us to enhance what we offer and run our school to its fullest capacity. This support helps us to continue resourcing our Library, maintain our beautiful grounds and playgrounds, strengthen our Literacy and Numeracy programs, and invest in technology that engages and supports student learning.

This year we have introduced a new process, with payments now made directly through Compass. We appreciate your patience as everyone becomes familiar with this updated system. When completing your payments, we kindly ask that you also review and complete the important permissions attached, including consent for Breakfast Club participation, photo permissions, and local excursion consent. These permissions help ensure your child can fully participate in the many opportunities and experiences available at school. Thank you for your ongoing partnership and support of our school community.

Mobile Phone Policy

Given the Department’s position on mobile phones in schools, I did want to highlight our policy here at Ferny Creek. Our policy documents that, “a mobile phone is a telephone with access to a cellular (telecommunication) system, with or without a physical connection to a network”. For the purpose of the policy, ‘mobile phone’ refers to mobile phones and any device that may connect to or have a similar functionality to a mobile phone, such as ‘smart watches’. All mobile phones and similar devices must be kept at the office during the school day. I thank you in advance for your support to ensure that our students understand our school’s requirements and processes.



Update Medical Information

It is very important that you update your child’s medical profiles to ensure that we have their current medical information at the office. If your child has Asthma, Anaphylaxis or Allergies you will need an individual Action Plan for them, provided by your medical practitioner. Individual management plans must be updated every twelve months or as required.

Front Playground

You will have noticed that our front playground is in need of some serious TLC and is not able to be accessed. We are currently exploring options, including repair, replacement or repositioning and welcome your thoughts. We will be providing the opportunity for community conversation around this topic as we have further clarity on each of the options. All students continue to have access to our recently refurbished back playground during this time.

As part of the reset of this front playground space, we now kindly ask all parents to move away from this area by 9.15am to allow us to have indoor/outdoor learning opportunities for our Junior students during Investigations.

Parking and Road Safety

To help keep all members of our community safe, we ask for your support in modelling positive road safety habits for our children. We are very fortunate to have a large community carpark directly opposite the school, conveniently located near the supervised pedestrian crossing. Please remember that the only entry into the school is now through the pedestrian gate adjacent to the crossing. Climbing over the fence is not permitted.

It is important that we all model safe behaviours by using the pedestrian crossing and always following the directions of the School Crossing Supervisor. While it may sometimes seem quicker to cross School Road further away from the crossing, these areas are not supervised and visibility can be limited, particularly when cars are parked along both sides of the road.

As indicated by signage, the Staff Car Park is for staff only. There can be a high volume of vehicles moving in and out of this space, which increases the risk of accidents, especially as children may not always be easily visible to drivers. We are also resetting all students to enter the office area via the foyer rear door to avoid the path near the staff carpark. You will note the red lines as a visual reminder of boundaries.

We also kindly remind all drivers to observe the 40km/h speed limit in the school zone. Thank you for working together with us to keep our students and families safe each day.

2026 School Council

Our School Council plays an important role in helping guide the direction of Ferny Creek Primary School and supporting our students' learning and wellbeing. Membership on School Council is generally for a two-year term and is a wonderful opportunity for parents and community members to contribute to school decision-making. Further information about the nomination process will be shared with families shortly. We encourage interested parents to consider nominating and becoming involved in our school community.

Parents' Club

Our Parents' Club have hit the ground running as usual with the organisation of our Welcome Picnic. This tireless group of parents (and friends) are looking for more members to support the school fundraising and events of 2026 including our Art Exhibition and Festival. This is also the place to contribute ideas about possible priorities for fundraising efforts. The AGM and first meeting will be held on Thursday 12th February.



BUSHFIRE SEASON

Given the likelihood of some warmer weather in the coming days, I would like to reshare this essential communication regarding bushfire preparedness.

Our Shelter in Place onsite (which is also our F-4 building), is a Community Fire Refuge, a location where community may need to access in the event of a bush fire. It is very important as we are in a bushfire prone area, to ensure that you have your own personal updated Fire Plans in place.



School preparedness and pre-emptive actions for the bushfire season

Fire danger ratings indicate how dangerous a fire would be if one started in hot dry and windy conditions and provide clear direction on the safest options for preserving life. They can be a trigger for action in community and for school and household level fire plans.

Schools and children's services listed on the Department of Education's Bushfire At-Risk Register (BARR) and those at some lower risk of bushfire or grassfire on the Category 1-4 list will be closed when a Catastrophic fire danger rating day is forecast in their Bureau of Meteorology district.

Schools and early childhood services listed on the Department of Education and Training's Bushfire At-Risk Register (BARR) and those at lower risk of bushfire or grassfire on the Category 1-4 list, take pre-emptive actions on elevated fire danger days to minimise the risk of being caught in a fire in these conditions. The category of risk (per the BARR list) determines the actions that the school or early childhood service will need to take on days of elevated fire danger.

We are a BARR Category 2 school and will be following the directives of the department, should school be in session:

EXTREME FIRE DAYS – we relocate to Wattle View Primary School in Ferntree Gully.

CATASTROPHIC FIRE DAYS – we are closed.

In the event that any of these evacuation processes are put in place, you will be notified via Compass and an SMS. **Please ensure that all your contact details are up to date on our systems.**

The department will advise our school of the potential for an **Extreme or Catastrophic fire danger rating** as information becomes available; however, the pre-emptive closure will be **confirmed after 4pm the day prior to an Extreme or Catastrophic fire danger day.**

Fire danger ratings are forecast by the Bureau of Meteorology up to four days in advance. It is important to also be aware that these fire danger ratings are issued according to Central weather districts covering a vast area of Victoria. The conditions in our own area could be different to those issued by BOM or for the Central weather district. For this purpose, Central is also divided into **Local Government Areas**. Our actions are governed by the weather forecast and fire danger ratings for our LGA and may sometimes conflict with the information issued by the BOM, due to a range of factors, e.g. current conditions on the mountain, recent rainfall etc. We take our directives from the Department of Education, who will be guided by the latest information for our LGA.

Should an Extreme or Catastrophic day be forecast, we will notify you of the potential closure via a Compass message. Relocation due to an Extreme forecast or Closure of the school due to a forecast Catastrophic day will be confirmed on the day prior and we will provide you with advice, as soon as we have the confirmed information from the Department of Education.

Once confirmed, the decision to close will not change, regardless of improvements in the weather forecast. This is to avoid confusion and help your family plan alternative care arrangements for your child. It is also important to note that:

- No staff will be on site on days where the school is relocated due to an Extreme forecast or closed due to a forecast Catastrophic day.
- Out-of-school-hours care will also be cancelled on these days.

- All school events will be postponed.
- School camps will be cancelled if a Catastrophic fire danger rating day is forecast for the Bureau of Meteorology district/LGA in which the camp is located, or if the travel involves passing through areas that have Catastrophic fire danger.
- All bus routes that travel through the Catastrophic area will be cancelled.

Families are encouraged to enact their own Bushfire Survival Plan on Catastrophic and Extreme fire danger rating days. **On such days, children should never be left at home alone or in the care of older children.**

For those of us living in a bushfire prone area, the Country Fire Authority (CFA) advises that when Catastrophic days are forecast, the safest option is to leave the night before or early on the morning of the Catastrophic day.

Multiple sources that offer information on emergencies are listed below:

- VicEmergency app – that can be downloaded on your android and iOS mobile devices
- VicEmergency Hotline (1800 226 226)
- Website <https://emergency.vic.gov.au>
- Facebook (<https://www.facebook.com/vicemergency>)
- Twitter (<https://twitter.com/vicemergency>)
- ABC local radio, Sky News and other emergency broadcasters

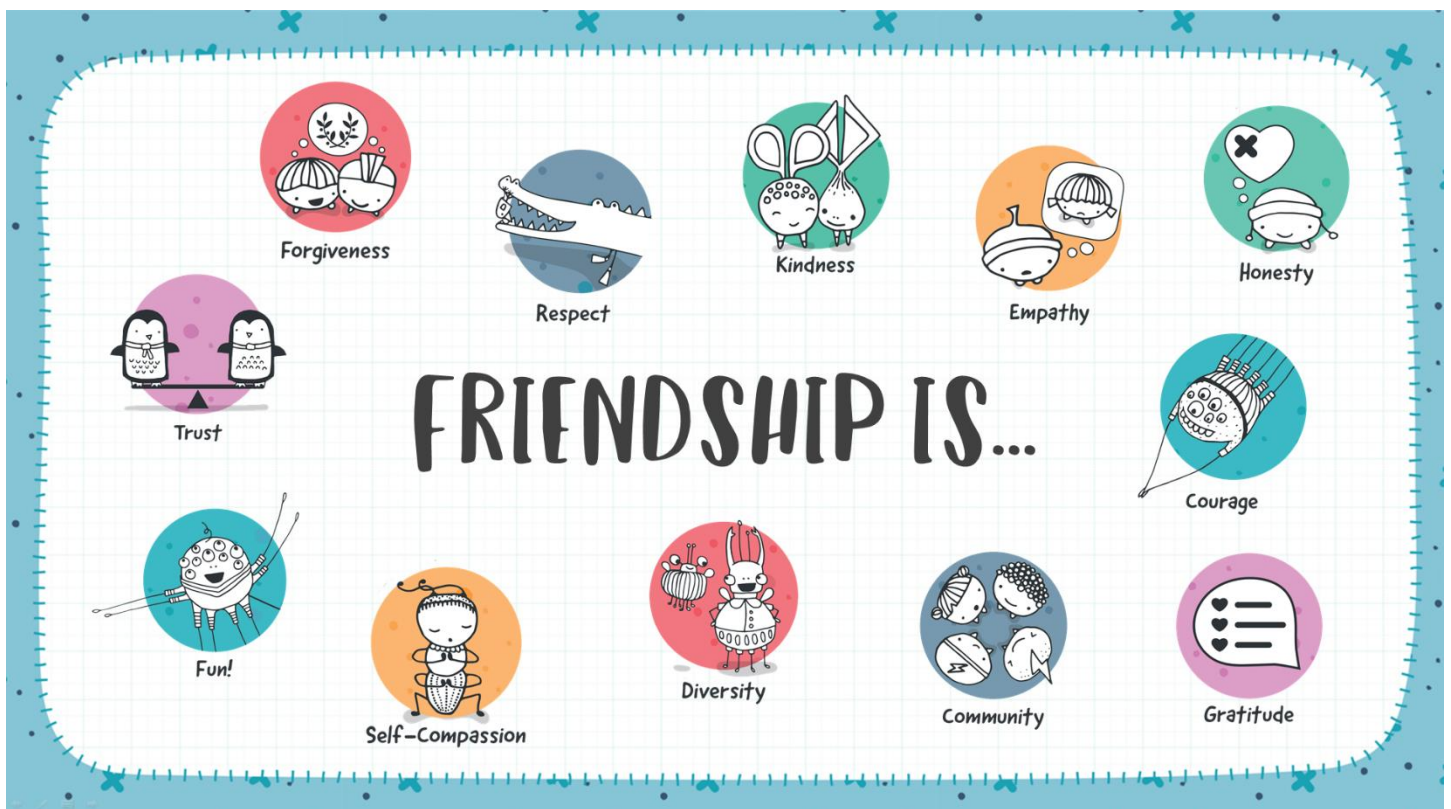
Upcoming Events

- Breakfast Club-begins Thursday 12th - all students must have consent for 2026
- Student Free Day Tuesday March 10th
- Billy Cart Derby-Friday March 13th

Have a great week,

Susan

Susan Vissenjoux – Principal





A LOVE OF SPEED!!!

FERNY CREEK PS - 47TH ANNUAL

BILLY CART DERBY

2026

**FRIDAY 13 MAR
5-7PM**

**PLUS
WHEELS PARADE**

Watch out
for more details
to come





And Delicious Food
and Beverage Stalls

**Got ideas? Got enthusiasm?
Got opinions about wheels?**

Come help us plan our upcoming Billy Cart event
- all help welcome, no experience needed.
It's going to be creative, and a whole lot of fun.

**Planning meeting
Thursday 12 February
6PM in the library**

WHAT ZONE ARE YOU IN?

BLUE	GREEN	YELLOW	RED
			
I FEEL: <ul style="list-style-type: none"> ♥ Tired ♥ Slow ♥ Bored ♥ Sad ♥ Sick 	I FEEL: <ul style="list-style-type: none"> ♥ Focused ♥ Ready to learn ♥ Calm ♥ Happy 	I FEEL: <ul style="list-style-type: none"> ♥ Frustrated ♥ Worried ♥ Excited ♥ Silly ♥ Not in control 	I FEEL: <ul style="list-style-type: none"> ♥ Elated ♥ Mad/Angry ♥ Terrified ♥ Out of control ♥ Yelling/Hitting
I CAN TRY... <ul style="list-style-type: none"> ♥ Getting a drink ♥ Walking ♥ Talking to a friend ♥ Reading a happy story 	I CAN TRY... <ul style="list-style-type: none"> ♥ Helping others ♥ Remembering goals ♥ Finishing work ♥ Expected behaviours 	I CAN TRY... <ul style="list-style-type: none"> ♥ Walking ♥ Counting to 10 ♥ Drawing the problem ♥ Talking to a teacher or trusted adult 	I CAN TRY... <ul style="list-style-type: none"> ♥ Deep breaths ♥ Finding a safe space ♥ Exercise ♥ Talking to teacher

FCPS Expected Behaviours Matrix



We are Respectful
We treat people, places, and things with kindness, care, and fairness

- I will use kind and positive language
- I will keep my hands and feet to myself
- I will follow the directions of all adults
- I will always display excellent manners
- I will be kind and helpful
- I will respect others privacy in the toilets




We are Responsible
We make good choices, take care of our things, and do what needs to be done without being reminded.

- I will look after all of my own belongings
- I will look after all school equipment
- I will put all my rubbish into the bin
- I will always tell the truth
- I will keep the school clean and tidy
- I will report any problems to an adult
- I will hand in my personal devices to the office



We are Resilient
We have a go, keep going when it's hard, and bounce back from challenges.

- I will choose the best strategy to help me be 'ready to learn' or 'ready to play'.
- I will always put in my best effort
- I will try even when it is hard
- I will be happy for other people's successes
- I will accept my mistakes and the mistakes of others
- I will acknowledge a genuine apology when it is offered

In all settings	In Learning Spaces	In outside spaces	Moving between spaces
<ul style="list-style-type: none"> • I will use kind and positive language • I will keep my hands and feet to myself • I will follow the directions of all adults • I will always display excellent manners • I will be kind and helpful • I will respect others privacy in the toilets 	<ul style="list-style-type: none"> • I will display whole body listening • I will respect everyone's right to learn • I will wait for my turn to speak • I will ask permission to leave the learning space • I will be kind and respectful in online environments 	<ul style="list-style-type: none"> • I will look after the school environment • I will include others • I will share equipment 	<ul style="list-style-type: none"> • I will walk with quiet voices and quiet feet • I will stay on the paths and avoid walking on the gardens
<ul style="list-style-type: none"> • I will look after all of my own belongings • I will look after all school equipment • I will put all my rubbish into the bin • I will always tell the truth • I will keep the school clean and tidy • I will report any problems to an adult • I will hand in my personal devices to the office 	<ul style="list-style-type: none"> • I will be prepared, organised and ready to learn • I will be on time • I will use all learning resources appropriately to help me learn • I will follow all class routines • I will keep all learning spaces tidy • I will reset learning spaces at the end of a session • I will sit on the floor or chairs safely 	<ul style="list-style-type: none"> • I will move to class when the music plays • I will remain outside unless I have permission to be inside • I will follow the direction of any adult on play support • I will return any borrowed equipment • I will play in the designated areas 	<ul style="list-style-type: none"> • I will line up quickly and quietly • I will walk safely in and around spaces • I will go straight to the office or toilet and straight back again
<ul style="list-style-type: none"> • I will choose the best strategy to help me be 'ready to learn' or 'ready to play'. • I will always put in my best effort • I will try even when it is hard • I will be happy for other people's successes • I will accept my mistakes and the mistakes of others • I will acknowledge a genuine apology when it is offered 	<ul style="list-style-type: none"> • I will try my best with all my learning tasks • I will 'have a go' before asking for help • I will ask for help if I need it 	<ul style="list-style-type: none"> • I will agree to and play by the rules of games • I will accept the rules of the game even if it doesn't go my way • I will be flexible when playing with others 	<ul style="list-style-type: none"> • I will accept that I cannot always be the line leader or choose my spot in the line 

FINANCIAL ASSISTANCE

INFORMATION FOR FAMILIES

Every Victorian child should have access to the world of learning opportunities that exist beyond the classroom. The Camps, Sports and Excursions Fund helps ensure that no student will miss out on the opportunity to join their classmates for important, educational and fun activities. It is part of making Victoria the Education State and the Government's commitment to breaking the link between a student's financial circumstances and their outcomes.

CAMPS, SPORTS and EXCURSIONS FUND (CSEF)

School camps provide children with inspiring experiences in the great outdoors. Excursions encourage a deeper understanding of how the world works while sports teach teamwork, discipline and leadership. All are a part of a healthy curriculum.

CSEF is provided by the Victorian Government to assist eligible families to cover the costs of school excursions, camps and sporting activities.

If you hold a valid means-tested concession card or support an out of home care student you may be eligible for CSEF. A special consideration category also exists for asylum seeker and refugee families. The allowance is paid directly to the school to use towards expenses relating to camps, excursions or sporting activities for the benefit of your child.

The annual CSEF amount per student is \$400 for all school students.

HOW TO APPLY

New applicants should contact the school office to obtain a CSEF application form or download from the website below.

If you applied for CSEF at your child's school last year, you do not need to complete an application form this year unless there has been a change in your family circumstances.

You only need to complete an application form if any of the following changes have occurred:

- **new student enrolments:** your child has started or changed schools this year.
- **changed family circumstances:** such as a change of custody, change of name, concession card number, or new siblings commencing this year.

Check with the school office if you are unsure.

MORE INFORMATION

For more information about CSEF visit:

<https://www.vic.gov.au/camps-sports-and-excursions-fund>



SUNSMART REMINDER

Just a reminder that **all** students and staff are expected to wear a named broad brimmed hat during any outside activities from the beginning of Term Four until the end of April.

Teachers will be reminding students that without an approved hat they will be directed to remain in the undercover basketball court area.

Ferny Creek Primary School encourages all staff and students to apply **SPF50 or SPF50+ broad spectrum, water-resistant sunscreen daily** whenever UV levels reach 3 and above. Sunscreen should be applied before going outdoors and reapplied every two hours.

Students and staff are encouraged to bring their own SPF50 or SPF50+ broad spectrum, water-resistant sunscreen to school.



COOL? CLOUDY? HOT? SUNNY?

Whatever the weather, use the 5 SunSmart steps to protect your skin and eyes. Check the SunSmart app each day to see the times you need to use sun protection.

- Wear clothing that covers your skin
- Use SPF 30 (or higher) broad-spectrum, water-resistant sunscreen every 2 hours
- Wear a hat that shades the head, face, eyes, ears and neck
- Use shade
- Wear sunglasses labelled AS 1067

VICTORIA
State Government

SunSmart is a Cancer Council Victoria program supported by VicHealth.

For more information
sunsmart.com.au/parents
or call 13 11 20



UNIFORM REQUIREMENTS

The wearing of school uniform is compulsory at Ferny Creek Primary School. All our uniform pieces can be purchased on site, from our uniform shop on Monday from 8.50am – 9.30am.



Broad brim
Grades F-2



Bucket hat
Grades 3-6



FERNY CREEK PRIMARY SCHOOL UNIFORM ORDER FORM

Student Name: _____ Phone No: _____ Class: _____

Date Ordered: _____ Date Paid: _____ Date Collected: _____

Uniform Shop Item	Size Range	Prices	Size	Quantity	Sub Total
TOPS					
Polo T-Shirt Short Sleeve	4,6,8,10,12,14,16	\$22.50			
Polo T-Shirt Short Sleeve	Adult S, M, L	\$25.00			
JUMPERS					
Polar Fleece Full Zip	6,8,10,12,14,16	\$40.00			
Polar Fleece Full Zip	Adult S, M, L	\$43.00			
Polar Fleece Black Vest	6,8,10,12,14	\$34.00			
PANTS					
Mesh Shorts	6,8,10,12,14,16	\$14.00			
JACKETS					
Waterproof Jacket – Fleece Lined	6,8,10,12	\$55.00			
ACCESSORIES					
Brimmed Hats (Prep – 6)	S, M, L	\$12.00			
Bucket Hats (Grades 3-6)	M, L, XL	\$12.00			
Girls Winter Pinafore	6,8,10	\$52.00			
	12,14	\$56.00			
School Bags		\$45.00			
Book Bags	Free for Foundation and new students	\$20.00			
Second hand uniform items		\$5.00			
				TOTAL	

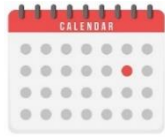
Uniform shop orders can be placed at the office.

Please clearly label all clothing items including shoes.

IMPORTANT DETAILS

CURRICULUM DAYS

Student Free Days are scheduled for 10th March and 20th April.



COMMUNICATION

Ferny Creek Primary School recognises the importance of the partnership between schools and families to support student learning, engagement and wellbeing.

Your child's teacher will offer you a range of opportunities to communicate with them including:

- ✓ Compass
- ✓ Email
- ✓ Formal meetings
- ✓ Before/After school chats

If you do not have Compass, please contact our school Office and find out how you can obtain the app. Compass will be used several times each week, so we want everyone to have access.

FACEBOOK

Please like our Facebook page. This will be used by the school to inform families and the public of events and updates at the school. Feedback and discussion with parents/carers are welcome, but the school will not use Facebook for this purpose.

Please contact the school directly if you wish to discuss matters, as per our communication process. Only this Facebook page is endorsed by the Principal. Any other Facebook pages are not officially authorised representatives of the school.

CONTACT DETAILS

It is very important the school has your most current emergency contact telephone details, home and e-mail address.

If you change telephone details or home e-mail address at any point, we ask that you update the school with your accurate contact details as soon as possible.

STUDENT SUPERVISION

Please note that our school grounds are supervised by school staff at the following times:

- ✓ Before school from 8.45am
- ✓ Throughout recess and lunch
- ✓ After school from 3.30pm to 3.45pm

The school grounds are not supervised outside the above times.

While some families use the front playground as a meeting place, please know children must be supervised by an adult outside of these times.



MORE IMPORTANT DETAILS

OUT OF HOURS CARE



TheirCare provides adventurous and stimulating Before & After School Care Programs in a safe environment for all children. During sessions children develop life skills, friendships, confidence and creativity through play.

Ferny Creek Primary School has partnered with TheirCare to provide this service to our school which includes quality care, booking flexibility, amazing programming for your children and commitment to deliver on our promise to our school community.

Operation Times:

Before School 7am-8.45am
After School 3.30pm-6.00pm

Service Phone Number:
0419 958 268

How to Enrol:
Visit TheirCare website
www.theircare.com.au

And click 'Book Now' in the top right-hand corner to register your child's details.

All families are strongly encouraged to register their child/ren for TheirCare as it is free to enrol, and while you are under no obligation to use this service, it does provide support for you in the event of an emergency. Plus, our students love attending this service! For further information about this program please contact TheirCare directly.

LUNCH ORDERS

Lunch orders are available each Wednesday. There is an ordering system via the QKR app and orders must be placed by 8pm each Tuesday for Wednesdays lunch.

Late orders cannot be accepted.



STUDENT SUPERVISION

All bike and scooter riders are required to wear a bike helmet in Victoria.

Approved helmets have the Australian Standards Mark TM (AS/NZS) 2063) and will be marked as suitable for cycling.

Children under the age of 12 may ride on footpaths as can a supervising adult. They are required to give way to pedestrians and to wheel their bicycles over pedestrian and children's crossings.

Bikes/scooters can be stored in our bike shed during school hours.

Also, by law everyone must wear a seat belt when travelling in a car in Australia.

SUNSMART

For Term 1 and Term 4 we wear our named broadbrimmed hat at all times when outside.



Term 1 2026



Keep this handy calendar on your fridge for upcoming events at school.
Check Compass, visit our website <http://www.fernycreekps.vic.edu.au/> or follow our Facebook page as this calendar is subject to changes.

	Monday	Tuesday	Wednesday	Thursday	Friday
	25	26	27 Grade 1-6 Students first day	28	29 Foundation first day (Parents tissues and treats)
February	02	03	04	05 Twilight Picnic 	06
	09	10	11	12 Breakfast Club begins Parents Club AGM	13
	16	17	18	19	20
	23 Foundation students attending full days	24	25 Billy cart family workshop 	26	27
March	02	03	04 Meet the teacher conversations TBC 	05	06 Clean Up 
	09 Labour Day Public Holiday	10 Student Free Day	11 Naplan begins	12	13 Billy Cart Derby 
	16	17	18	19	20
	23	24 Whole School excursion TBC School Council AGM	25	26	27
April	30	31	01	02 Easter hat parade and raffle Colour Run Last day of term early 2.30pm finish 	03



9755 1522

fernycreekps@education.vic.gov.au